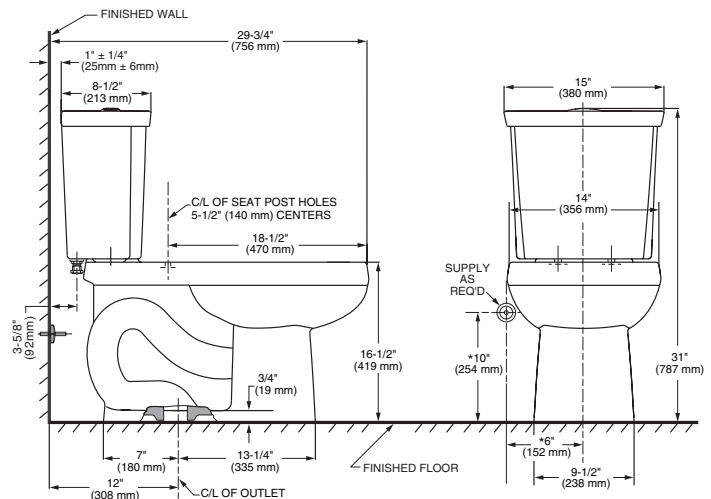


**CLEAN® SIPHONIC DUAL FLUSH
RIGHT HEIGHT® ELONGATED COMPLETE TOILET**

❑ **3381.216**

- Vitreous china
- High efficiency, low consumption
 - Heavy Flush (6.0 Lpf/1.6 gpf)
 - Light Flush (3.8 Lpf/1.0 gpf)
- PowerWash® rim scrubs bowl with pressurized water every flush
- Elongated siphon action bowl with direct-fed jet
- 16-1/2" Rim height for accessible applications
- EverClean® surface inhibits the growth of stain and odor causing bacteria, mold and mildew on the surface
- Meets EPA WaterSense® criteria
- 305mm (12") rough-in
- Fully glazed 2" Trapway
- Generous 9" x 8" water surface area
- **Easy Installation.** Everything needed for toilet installation is included and can be hand tightened
- Chrome plated, top mounted, push button actuator
- Sweeping pier on bowl helps omit buildup of dust and dirt in the crevice between the tank and the bowl
- 2 color matched bolt caps
- Color-matched plastic toilet seat
- Wax ring gasket with closet bolts
- 100% factory flush tested
- Lifetime warranty on chinaware, 10 year warranty on all mechanical parts, and 1 year warranty on seat



Nominal Dimensions:

756 x 380 x 787mm

(29-3/4" x 15" x 31")

Compliance Certifications -

Meets or Exceeds the Following Specifications:

- ASME A112.19.2/CSA B45.1 for Vitreous China Fixtures
- US EPA WaterSense® Specification for HET's

NOTES:

THIS COMBINATION IS DESIGNED TO ROUGH-IN AT A MINIMUM DIMENSION OF 305MM (12") FROM FINISHED WALL TO C/L OF OUTLET. * DIMENSION SHOWN FOR LOCATION OF SUPPLY IS SUGGESTED. SUPPLY NOT INCLUDED WITH FIXTURE AND MUST BE ORDERED SEPARATELY.

IMPORTANT: Dimensions of fixtures are nominal and may vary within the range of tolerance established by ANSI Standard A112.19.2. These measurements are subject to change or cancellation. No responsibility is assumed for use of superseded or voided pages.

To Be Specified:

- ❑ Color: ❑ White
- ❑ Supply with stop:

EVERCLEAN®
Surface

